

# NOISE INITIATIVES FOR AUCKLAND

A N C C G

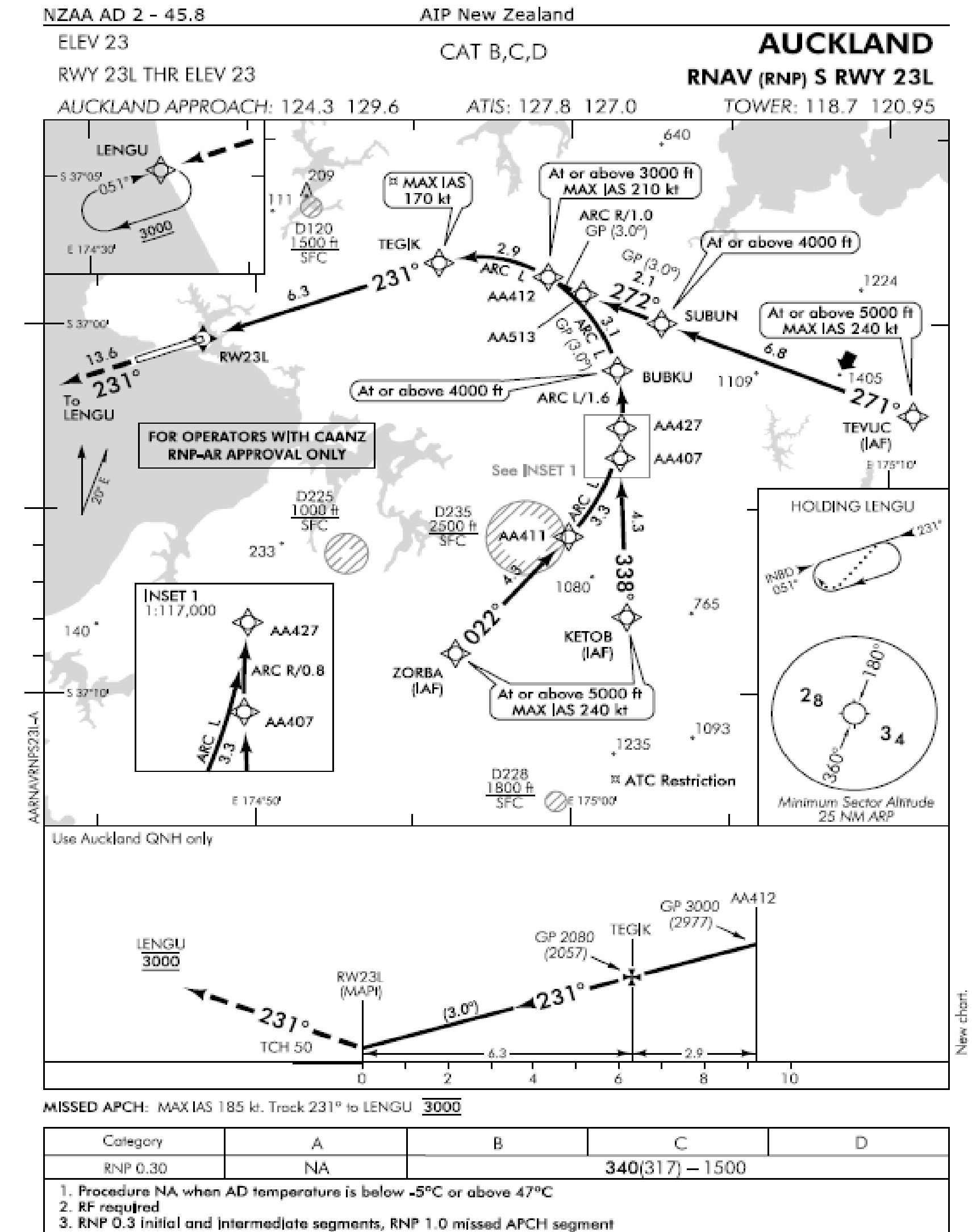
James Evans

2<sup>nd</sup> September 2019

# SMART APPROACHES

AIRWAYS

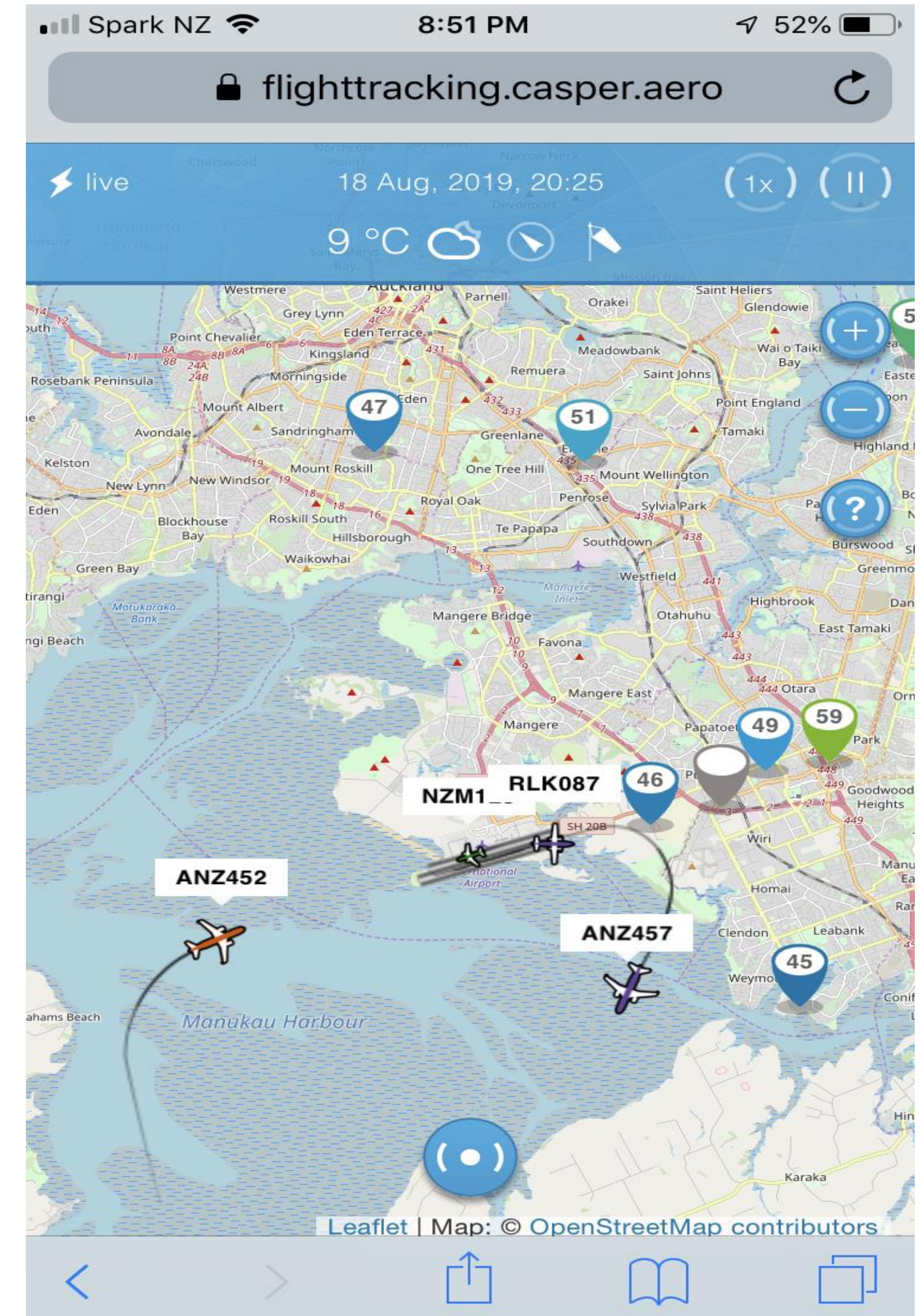
- Idle Power
- Less Fuel
- Less noise
- Less CO2 Emissions
- Only used between 7am and 10pm



making your world possible



- **AIAL with Marshall Day have developed a streamlined and transparent reporting process for community members to raise concerns about noise and specific flights using CASPER.**
- **Ongoing education of elected ANCCG community representatives around air traffic control procedures and aircraft/airline operations.**









- **Non Jets SIDs turning north at 500ft not used between 10pm and 7am.**
- **Jets not allowed to do Visual Approaches from north of the RWY Centreline at any time.**
- **All aircraft from the south for RWY23L between 10pm and 7am join final at or outside 8nm final.**
- **All departures over built up areas between 10pm and 7am remain on SID.**

